



The BAWB Federation

Bainbridge, Askrigg, and West Burton Primary Schools

*Rooted in the message of The Good Samaritan, we provide an aspirational education for all.*

*We flourish academically, spiritually, and socially, enriching our communities.*

Executive Headteacher: Ms Vicky Collins

## BAWB Bad Weather (Closure) Policy

Date of review:	January 2024
Reviewed by:	Vicky Collins
Date adopted by the Governing Board:	N/A
Governing Board Committee:	Full Governing Board
Link Governor (if appropriate):	Sue Ryding
Publication status (e.g. on the website or available on request?):	Available on request (with personal details and phone numbers removed)
Date next due for review:	January 2025

### Equality Statement:

At The BAWB Federation we work hard to ensure that the culture and ethos are such that, whatever the abilities and needs of members of the school community, everyone is equally valued and people treat one another with respect. Our schools provide pupils and staff with the opportunity to experience, understand and value diversity. In the operation of this policy, we will endeavour to ensure that all members of our school community receive equal treatment irrespective of their age, gender, race, colour, ethnic origin, family commitments, marital status, sexual orientation, disability or religious beliefs.

### Distinctive Christian Vision

This policy has been written and/or adopted with our distinctive Christian ethos in mind:

*Rooted in the message of the Good Samaritan, we provide an aspirational education for all. We flourish academically, spiritually, and socially, enriching our communities.*

*Matthew 22v 37-39 (NEB): Love the lord your God with all your heart, with all your soul, and with all your mind. Love your neighbour as yourself.*

## Emergency School Closure (e.g. due to weather)

**In all circumstances, we will endeavour to keep our schools open where possible.** Sometimes this may mean operating with a reduced staff and it will be at the discretion of the headteacher as to when this becomes a safeguarding or supervision risk.



In the event of seriously inclement weather (heavy snow, flooding, etc.) the headteacher may need to make a decision about whether to close any one of our schools.

In order to make this decision, she may contact members of staff who live closest to school, those who are travelling long distances, and/or our bus companies. Members of staff are welcome to contact the headteacher with any information that may be helpful in making this decision.

The default position is that school will remain open. If no-one hears anything, please assume that school is open.

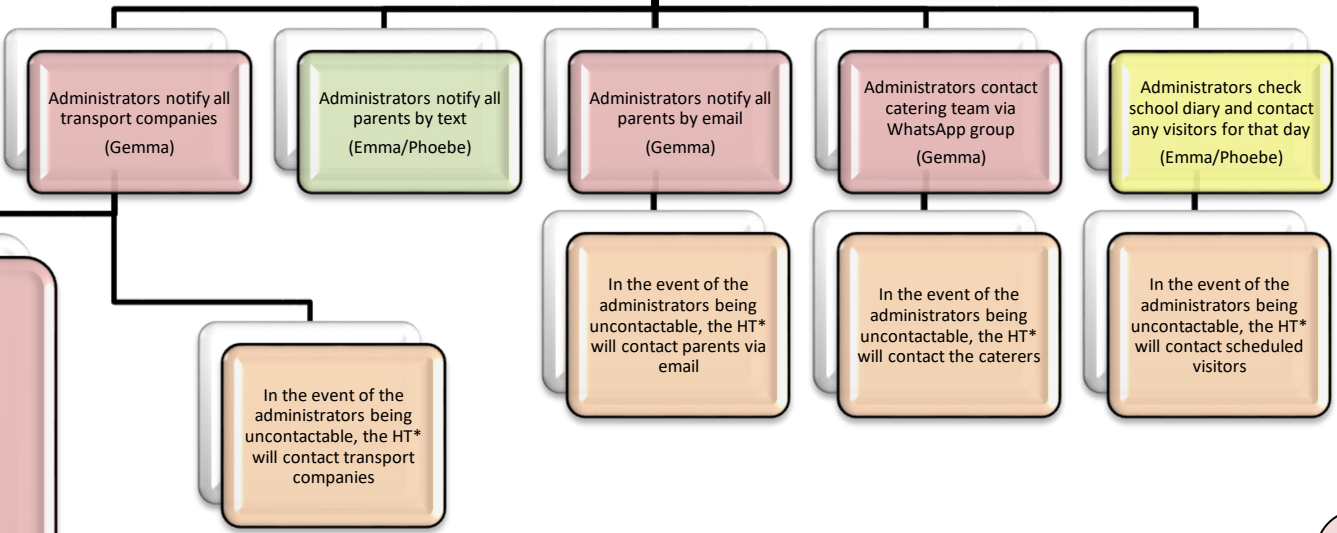
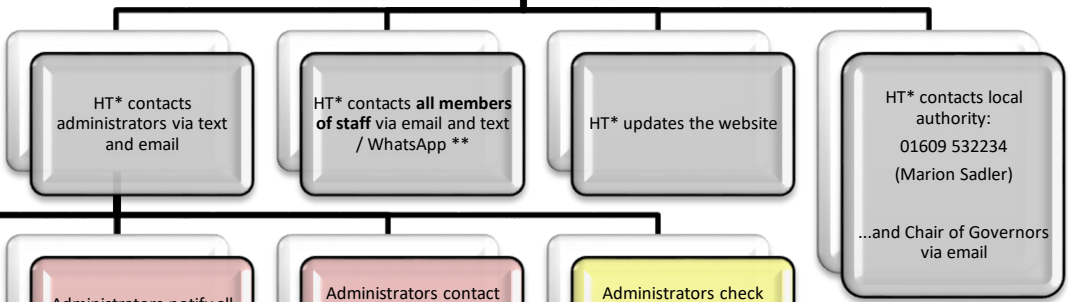
At any point, if any members of staff are concerned about their journey to school, they should contact the headteacher as early as possible:

Vicky - Mobile:            07496 130695 (text or WhatsApp messages will also be received)

In the event of the headteacher being out of area or unavailable, she may delegate this decision to Base Leaders. In the unlikely event of the headteacher being uncontactable, the base-leaders may decide to make this decision, though this would be in exceptional circumstances.

**In the event of the headteacher making the decision to close any of our schools, the following process will come into action:**

**Headteacher\* makes the decision to close one or more of the schools**



**Fosters**  
01969 622331  
07811 385392

**Peacocks**  
01969 650212  
01969 650409

**AnyDale Taxis:**  
07432518639

**NYCC Transport (Aysgarth run)**  
Fleet dep: 01609 798061  
Mike Hubbocks: 07740 088281  
Bev Rix: 07934 671156

In the event of the administrators being uncontactable, the HT\* will contact transport companies

**\*\* Email groups:**

- All employed staff
- Additional, support and BAWB supply staff

\* Where the headteacher has delegated responsibility or is unavailable, this may be the base-leader (exceptional circumstances only).