

Homework

@ The BAWB Federation

Wednesday 22nd February 2023



Homework: what the research says:

- Homework has a positive impact on average, particularly with pupils in secondary schools.
- The quality of the task set appears to be more important than the quantity of work required from the pupil.
- To maximise impact, it also appears to be important that students are provided with high quality feedback on their work.
- There is some evidence that the impact of homework diminishes as the amount of time pupils spend on it increases.
- Pupils from disadvantaged backgrounds are less likely to have a quiet working space, are less likely to have access to a device suitable for learning or a stable internet connection and may receive less parental support to complete homework and develop effective learning habits. These difficulties may increase the gap in attainment for disadvantaged pupils.
- Broader evidence suggests that homework should not be used as a punishment or penalty for poor performance.



Issues we have collectively identified:

Online homework is more difficult for parents to engage with, and some software enables guessing.
Online homework is easier to differentiate and mark.

Online or on paper?

School days are long!
We need to protect our children from burdensome expectations and give them time to relax and enjoy other activities.

Mental Health

Inconsistent parental engagement with homework (parental views); level of support / guidance provided. This makes homework difficult to set.

Parental support

Effective differentiation is difficult to achieve when levels of parental support and time given to homework are not clear or consistent.

Differentiation

All children are different. How do we balance expectation and consistency? Requiring homework to be completed in the same way / quantity is not inclusive and is damaging for the children with the highest needs.

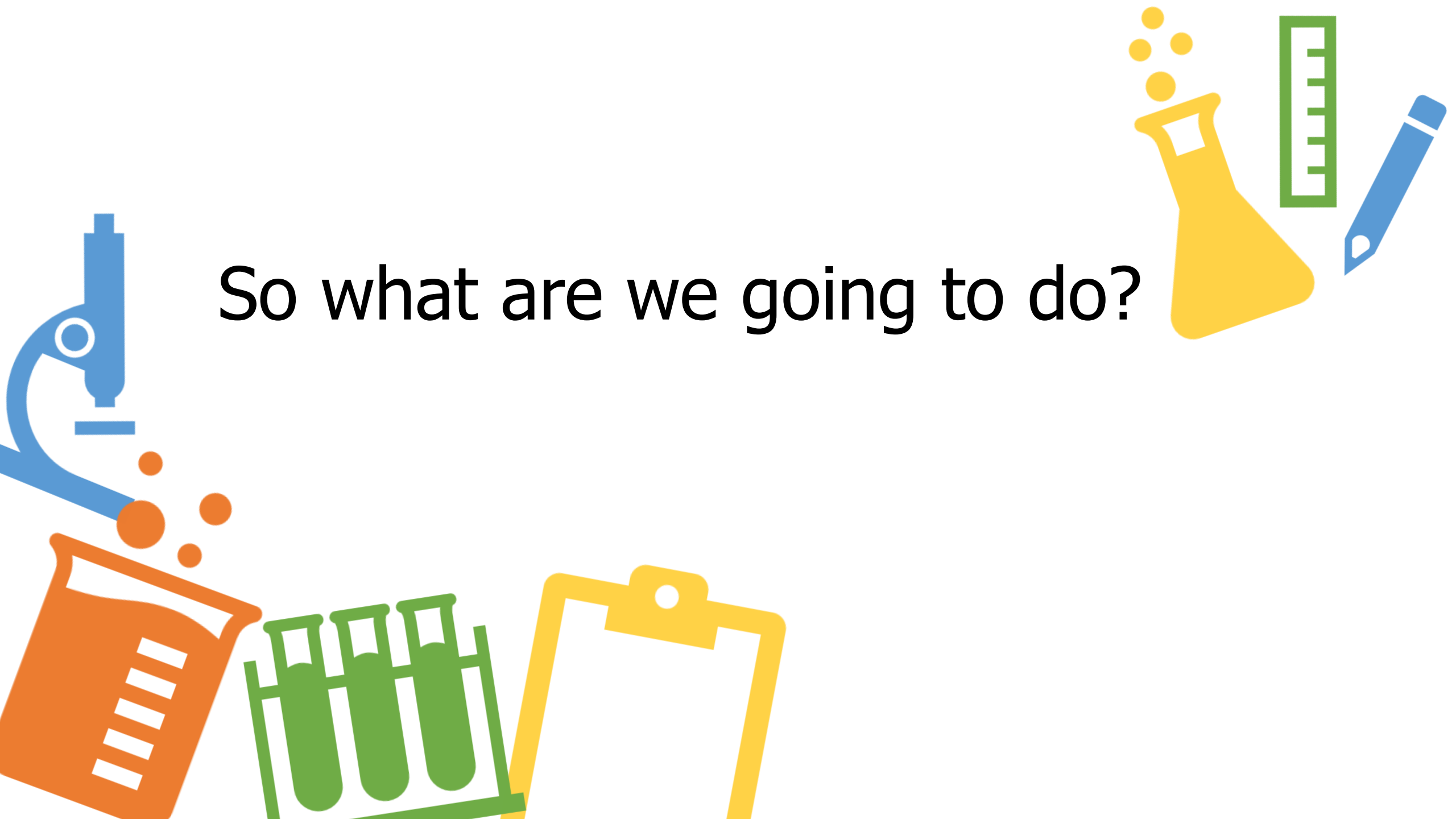
Inclusivity and expectation

We know that the most effective feedback is provided in the moment. This cannot be achieved with homework. Is it impactful enough?

Feedback



So what are we going to do?



Homework @ BAWB

Stop setting compulsory, marked homework.

Focus on reading.

Provide resources, guidance, and support for self-led homework.



Stop setting
compulsory,
marked
homework.



Stop setting
compulsory,
marked
homework.

Activity
Passport



Stop setting
compulsory,
marked
homework.

Activity
Passport

Teacher's
Challenge!



Focus on
reading.



Provide resources,
guidance, and
support for self-led
homework.

Click here to see the
homework page on
the website.



Remember...

We are here to help!

If you want more resources or guidance,
or if you have any questions, please ask.



Any Questions?

Thank you for your continued support.

