

Clarinet

Rudolph the Red Nose Reindeer

④

Handwritten circled 4 above the staff.

1 1 T 1 1 T 1 1 T 1 2 1 T

6

1 1 1 1 2 2 2 2 2 2 2 2 2 2 2 2 2 2 1

13

1 1 1 1 1 1 2 2 2 2 2 2

19

2 1 2 3 T T N T 1 3 1 2 T 1 2 3

25

2 1 0 N 0 0 0 N N 0 N 0 T 2

D.S.

29

2 1 2 1 2 T 2 1 T 1

Clarinet (ex)

Rudolph the Red Nose Reindeer

④

1 1 T 1 1 T 1 1 T 1 2 1 T

6 *To CODA*

1 1 1 1 2 2 2 2 2 2 1

13

1 1 1 1 1 1 2 2 2 2 2 2

19

2 1 2 3 T T N T 1 3 1 2 T 1 2 3

25

4 2 0 N 0 0 0 N N 0 T 0 2 2

29


2 1 2 1 2 T 2 1 T


Rudolph the Red Nose Reindeer

Saxophone 1

Arr. Price

4

4 



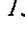
6 5 6 1 3 5 6 6 5 6 5 6 3 UM M 6 M 2 UM

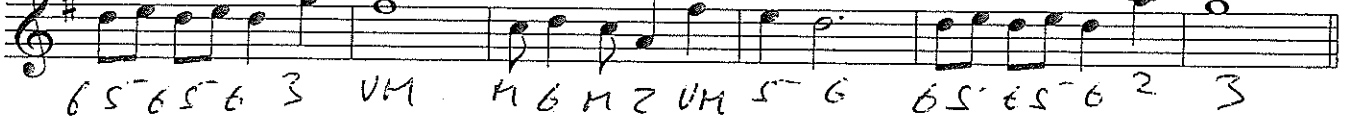
10 

To Coda 



5 6 6 5 6 5 6 5 1 6 5 6 1 3 5 6

15 



6 5 6 5 6 3 UM M 6 M 2 UM 5 6 6 5 6 5 6 2 3

21 



3 3 3 3 3 3 UM UM UM 3 6 3 2 UM 2

27 

. D.S. 



5 UM 3 2 3 UM 6 5 6 5 6 2 3

31 



6 5 6 5 6 2 3 6 3

Saxophone 2

Rudolph the Red Nose Reindeer

④

4

1 M 1 3 6 M 1 1 1 6 0 M 2 1 2 4 2

10

M M 2 M 1 2 3 1 M 1 3 6 M 1 1 1 6 0

16

M 2 1 2 4 2 M M M M 6 M 1 5 5 5

22

6 6 6 6 6 6 2 0 6 5 4 M 2 2

28

D.S.

6 5 6 M M 6 M 1

31

M M M 6 M 6 6 6

Saxophone 3

Rudolph the Red Nose Reindeer

④

11 M 11 M 11 M 1 2 1 M

6

1 1 1 1 2 2 2 2 2 2 2 2 1

TO CODA

13

1 1 1 1 1 1 2 2 2 2

19

2 1 2 3 M M 5 M 1 3 1 2 M 1 2 3

25

2 1 6 5 6 6 6 5 5 6 5 6 M 2

D.S.

29

2 1 2 1 2 M 2 (M)

CODA

Trumpet

Rudolph the Red Nose Reindeer

4

0 0 0 0 0 0 0 0 0 0 0 2

6

To CODA

0 0 0 0 1 1 1 1 1 1 2 0

13

0 0 0 0 0 0 1 1 1 1 1

19

1 0 1 0 1 0 2 0 3 0 0

25

DS?

3 2 0 2 2 2 2 0 0 2 2 0 1 3



29

1 0 1 0 0 0 0 0 0 0

Trumpet (ex)

Rudolph the Red Nose Reindeer

④

0 0 0 0 0 0 0 0 0 0 1/2

6

TO CODA

0 0 0 0 1 1 1 1 1 1 2 0

13

0 0 0 0 0 0 1 1 1 1

19

1 0 1 0 2 2 0 2 0 2 0 1 2 0 1 2

25

D.S.:2

1 3 2 0 2 2 2 2 0 0 2 2 0 1 3

29

1 0 1 0 0 0 0 0

④
Trombone

Rudolph the Red Nose Reindeer

②

1 1 1 1 1 1 6 # 2 1 1

6

1 1 1 1 6 1 6 1 6 1

11

6 1 1 4 1 1 1 1 1 1

16

6 6 4 3 1 6 1 6 1 3 4 6 1 1 1

21

4 4 1 4 1 4 1 2 4 1 3 1 6 4 3 1 4 6 6 4

26

D.S. ⊕

1 1 1 4 4 1 2 6 6 4 2 6 1 1 4 1 1

31

6 6 6 6 6 1 1 1 1 1 1 4 4 1 1 1 1

④
Trombone (ex)

Rudolph the Red Nose Reindeer

6

1 1 1 1 1 1 6 4 2 1 1

6

1 1 1 1 6 1 6 1 6 1

11

6 1 1 4 1 1 1 1 1 1

16

CODA

6 6 4 3 1 6 1 6 1 3 4 6 1 1 1

21

3 1 4 1 6 1 1 6 4 1 6 6 4

26

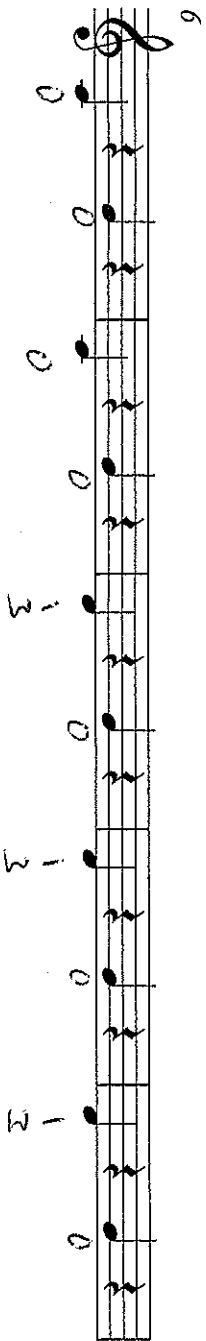
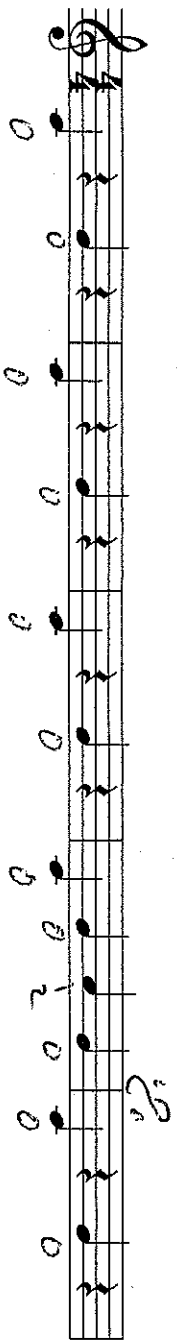
D.S. CODA

1 1 1 4 4 1 2 1 3 4 6 6 1 1 4 1

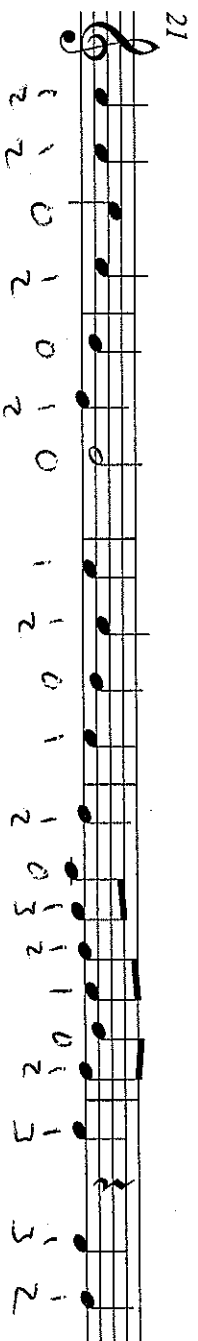
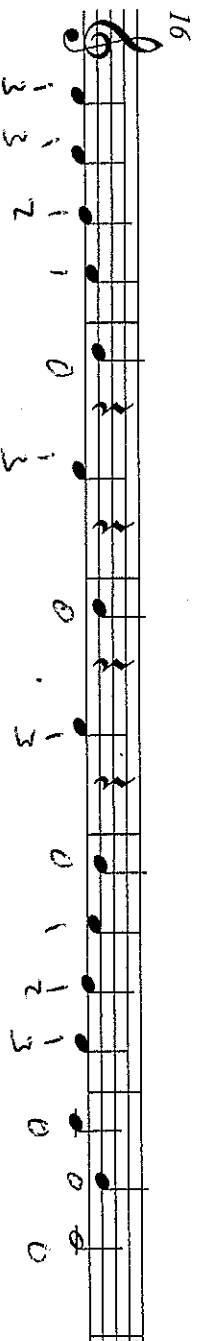
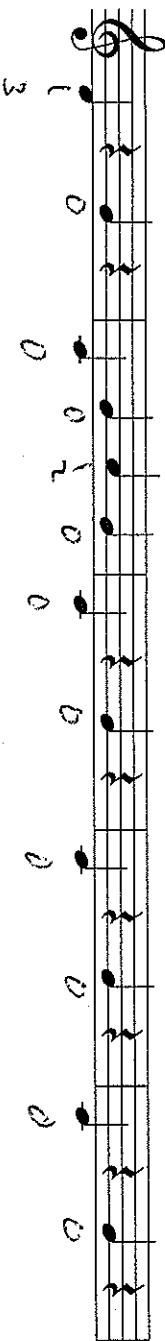
31

6 6 6 6 6 1 1 1 1 1 4 4 1 1 1 1

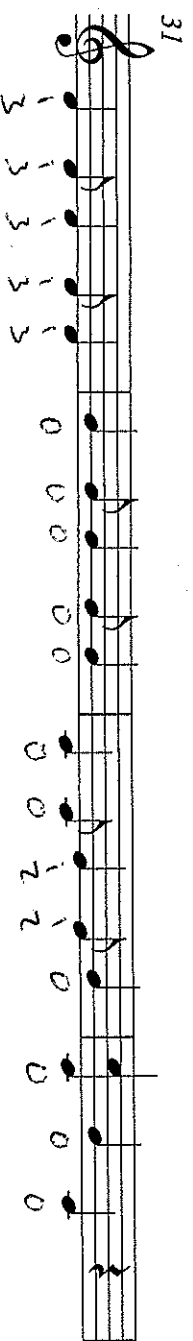
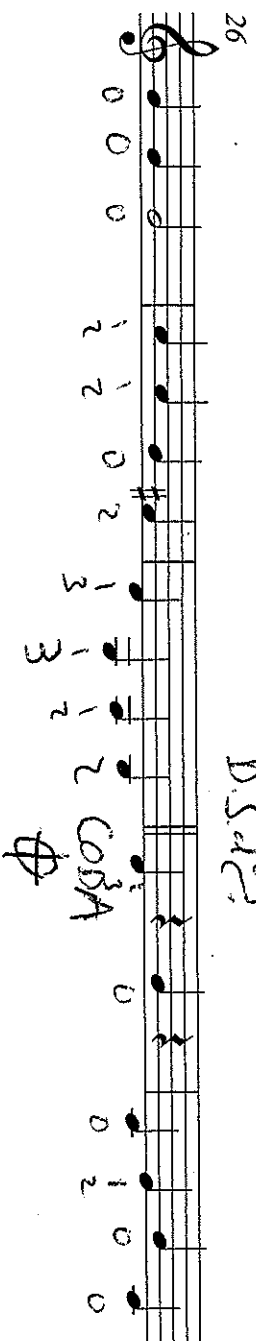
Rudolph the Red Nose Reindeer



To CODA
11



D.S. al Fine



4
Baritone (ex)

Rudolph the Red Nose Reindeer

Handwritten musical notation for measures 1-5. The staff is in treble clef with a 4/4 time signature. The melody consists of quarter notes. Fingerings are indicated by numbers 1-3. A fermata is written over the final measure.

Handwritten musical notation for measures 6-10. The staff is in treble clef with a 4/4 time signature. The melody consists of quarter notes. Fingerings are indicated by numbers 1-3.

TO CODA

Handwritten musical notation for measures 11-15. The staff is in treble clef with a 4/4 time signature. The melody consists of quarter notes. Fingerings are indicated by numbers 1-3.

Handwritten musical notation for measures 16-20. The staff is in treble clef with a 4/4 time signature. The melody consists of quarter notes. Fingerings are indicated by numbers 1-3.

Handwritten musical notation for measures 21-25. The staff is in treble clef with a 4/4 time signature. The melody consists of quarter notes. Fingerings are indicated by numbers 1-3.

Handwritten musical notation for measures 26-30. The staff is in treble clef with a 4/4 time signature. The melody consists of quarter notes. Fingerings are indicated by numbers 1-3. A double bar line is present in the middle of the system. The text "D.S." is written above the staff.

Handwritten musical notation for measures 31-35. The staff is in treble clef with a 4/4 time signature. The melody consists of quarter notes. Fingerings are indicated by numbers 1-3.

④

Tenor Horn

Rudolph the Red Nose Reindeer

0 1 0 1 0 1 0 1 2 1 0 1

6

0 1 0 1 2 1 2 1 2 1

11

1 2 1 3 0 1 2 3 0 1 3 0 1 3

16

1 2 2 2 2 3 2 3 2 3 2 0 1 0

21

1 2 0 1 3 2 3 0 2 3 0 2 0 1 0 1 2

26

1 1 1 2 2 3 1 3 3 2 2 1 3 0 2 0 0

31

1 2 2 2 2 2 3 3 3 3 3 0 0 2 2 1 0 1 0